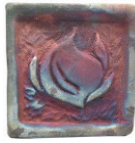




PG801
Apple Crackle



PG802
Copper Flash



PG803
Copper Penny



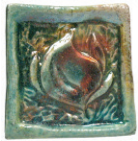
PG805
White Crackle



PG806
Midnight Luster



PG807
Opal Shimmer



PG808
Beetle Juice



PG809
Alligator



PG810
Pipenburg
Red-Bronze



PG811
Blue Dolphin



PG812
Copper Ridge



PG813
Michigan Patina



PG823
Purple Passion



PG824
Firedance

No other firing technique offers the excitement, immediacy and drama of raku! Raku glazes produce a variety of color effects depending on firing and reduction techniques. The reduction process is absolutely necessary for these color results: you cannot get them from firing in an electric kiln. Your results will vary depending on environmental and firing variables. The color samples show only some of the possibilities.

Raku pieces are for decorative purposes only, and should never be considered foodsafe or watertight.

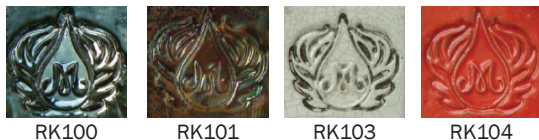
Raku Glazes	4oz	Pint	Gallon
PG801.....Apple Crackle	\$4.00	\$15.80	\$79.40
PG802.....Copper Flash	\$4.00	\$11.90.....	\$57.45
PG803.....Copper Penny	\$4.00	\$12.65	\$61.50
PG805.....White Crackle	\$4.00	\$ 8.75.....	\$47.00
PG806.....Midnight Luster	\$4.00	\$14.45.....	\$71.95
PG807.....Opal Shimmer	\$4.00	\$12.75	\$62.40
PG808.....Beetle Juice	\$4.00	\$10.40.....	\$49.00
PG809.....Alligator.....	\$4.00	\$12.70	\$61.75
PG810.....Piep. Red-Bronze.....	\$4.00	\$12.70	\$61.95
PG811.....Blue Dolphin.....	\$4.00	\$15.95	\$80.35
PG812.....Copper Ridge.....	\$4.00	\$11.55.....	\$55.35
PG813.....Michigan Patina	\$4.00	\$12.00	\$57.95
PG823.....Purple Passion	\$4.00	\$13.45	\$66.05
PG824.....Firedance	\$4.00	\$12.75	\$62.25
PG899.....Sample Set of 14 glazes (4oz each).....			\$39.95 (Retail value \$56.00)

Quantity discounts apply on multiples of the same item

MAYCO RAKU GLAZES

	1-5 @	6+ @
Pints.....	\$12.25	\$9.19

RK100.....Metallic Black	RK105Copper Penny
RK101.....Copper Metallic Penny	RK106Peacock Matte
RK103.....White Crackle	RK107.....Oil Slick
RK104.....Raku Red	



Raku firing is a lowfire process: the target temperatures are the same as electric Δ06 firing. Expand your palette with glazes made for electric firing! Some will work better than others: experiment and have fun!



The facing side of this clover vase was glazed with Duncan AG409 Jade Haze Artisan Glaze, and fired in raku with reduction in newspaper and red cedar shavings.