

NORTHSTAR EXTRUDERS

Quantity discounts apply on multiples of the same item

Stainless Steel Extruders

Break away from the limits of wheel-throwing and handbuilding! The 4" square barrel is designed for easy loading and holds 5 to 8 pounds of clay.

- NS910..... Stainless Extruder w/Basic Dies \$419.95
- NS950..... Stainless Steel Extruder Package (includes 2 die masks,..... \$479.95
hollow Z-brace, 2 shaped coil, 1 blank, 4 hollow dies)
- NS950-EX Stainless Extruder Package with Expansion Box..... \$639.99



Die Expansion Box

Work larger with your extruder! This NorthStar innovation maximizes your equipment investment by adapting 6" dies (like the dies for the Big Blue!) to your current 4" extruder. Bolt the expansion box on the bottom of your extruder, and it's ready.

- NS940..... Die Expansion Box..... \$159.99
- NS940-EX Die Expansion Box Package (incl die set NS991 and \$259.99
center brace NS983 to fit expansion box)

About NorthStar Dies

NorthStar's standard dies are made of 1/2"-thick polyethylene, which is extremely wear-resistant and completely non-contaminating. The top edge (facing the clay in the extruder barrel) is beveled to compact the clay as it passes through for a crisper, more solid extrusion. In the hollow dies, there is a bevel on both the interior and exterior portions under each side of the bracket (which holds the hollow dies' center pieces) that helps the extrusion to "heal" after it has been split by the bracket. When you use NorthStar's hollow dies, the center part is automatically in exactly the right place and the wall thickness will be even all the way around.

Standard Die Sets

- NS915.... Basic Die Set \$67.99

This die set included with all purchases of NorthStar Extruders.



One Blank (NS930)



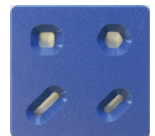
Die Mask (NS925DM)



4 Small Coils



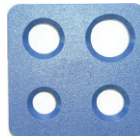
4 Small Coils



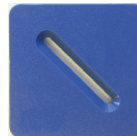
Small Solid Shapes

- NS925.... Standard Accessory Dies \$119.99

Hollow dies require use of NS957, which is sold separately.



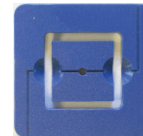
Large Coils (3/4", 7/8", 1", 1-1/4")



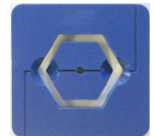
2 Solid Ribbons (1 1/2", 2 1/2")



2 Hollow Rounds (1 1/2", 2 1/2")



2 Hollow Squares (1 1/2", 2 1/2")



2 Hollow Hexes (1 1/2", 2 1/2")

Kemper Klay Gun K45



An amazingly versatile miniature handheld extruder. You'll find many uses for it!

- | | 1-5 | 6-11 | 12+ |
|--------------------------|---|--------------|---------|
| K45 Klay Gun | \$16.99..... | \$13.60..... | \$11.90 |
| K45D..... Disc Set | \$4.19..... | \$3.36..... | \$2.94 |
| | <i>Replacement</i> | | |
| K45DS .. Screen Set... | \$3.45 | \$2.77 | \$2.43 |
| | <i>Replacement (special order only)</i> | | |

Basic Die Accessories

Each sold separately.



NS925GS
4 Solid Shapes
\$31.99



NS925T
4 1/4" Tile Strap
\$29.99



NS926A
4 Handles
\$31.99



NS957
Z-Brace
for Hollow Dies
\$29.99