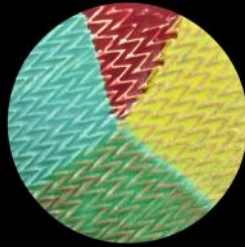
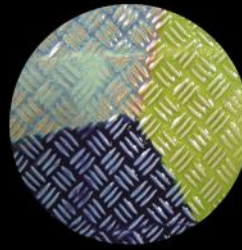




GLW56 Chartreuse Matte
 PG658 Blue Violet
 PG647 Burnt Orange
 GLW39 Vanilla Creme



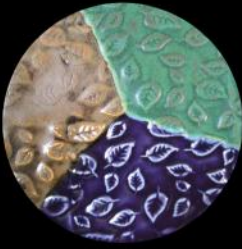
GLW25 Aqua Gemstone
 PG648 Maroon
 GLW56 Chartreuse Matte
 GLW08 Copper Patina



GLW46 Northern Lights
 PG652 Chartreuse Gloss
 PG638 Blue Violet



PG651 Mottled Brown
 PG648 Maroon
 PG651 Mottled Brown



PG651 Mottled Brown
 GLW08 Copper Patina
 PG638 Blue Violet



PG638 Blue Violet
 GLW55 Turmeric
 GLW54 Paprika
 PG648 Maroon



PG651 Mottled Brown
 GLW54 Paprika
 PG653 Golden Green



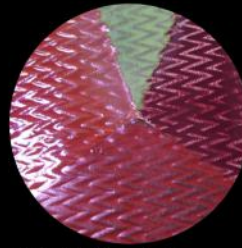
PG647 Burnt Orange
 PG638 Blue Violet
 GLW56 Chartreuse Matte
 GLW32 Latte



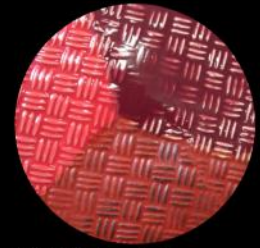
GLW25 Aqua Gemstone
 GLW32 Latte
 PG647 Burnt Orange



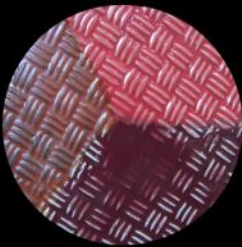
GLW08 Copper Patina
 GLW30 Cinnamon
 PG647 Burnt Orange



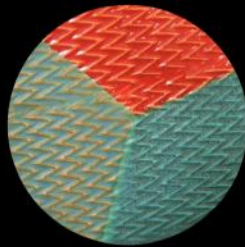
PG647 Burnt Orange
 GLW56 Chartreuse Matte
 PG648 Maroon
 GLW54 Paprika



PG647 Burnt Orange
 PG648 Maroon
 GLW54 Paprika



GLW54 Paprika
 PG648 Maroon
 PG638 Blue Violet



GLW57 Dusty Blue
 PG647 Burnt Orange
 GLW25 Aqua Gemstone

Color has more options :

Split Complement : Using any color with 2 colors on each side of it's compliment.

Triad : Using 3 colors equally spaced from each other on the color wheel.

Tetrad : Using a combination of 4 colors on the wheel that are 2 sets of compliments .

Key Color :Predominant color in the color scheme.

Seeing these colors side by side or triads , it's easy to see when a color is dominant or recessive - helping to select it's place on your ceramic work.

This excersize in color was begun using our new glaze colors. Along the way it grew to include some of our existing glazes this is only a beginning - there is so much more to explore !

Georgies
 CERAMIC AND CLAY CO.

800 - 999 - 2529 www.georgies.com