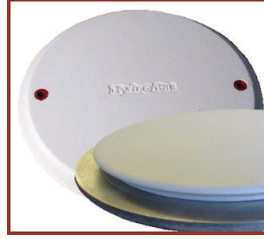


# WHEEL BATS & TOOLS

Quantity discounts apply on multiples of the same item

## PLASTER HYDROBATS

The Hydrobat is made of gypsum cement ten times stronger than conventional plaster, but with a similar water absorption rate. Two hard rubber grommets in the bottom assure snug fit on wheels with standard pin spacing.



HB6 .....	6¼" wide - Mini .....	\$11.00
HB8.5 .....	8½" wide (2 lbs) .....	\$14.00
HB10 .....	10" wide (3 lbs) .....	\$17.20
HB12.5 .....	12½" wide (4 lbs) .....	\$23.70
HB14 .....	14" wide (5 lbs) .....	\$26.70
HB16 .....	16" wide (8½ lbs) .....	\$35.00
HB18 .....	18" wide (10 lbs) .....	\$46.50
HB20 .....	20" wide (12 lbs) .....	\$62.00
HBA .....	Hydro Bat Adapter (for 6¼"-10") .....	\$40.00

## BAT MATES

Hold down loose, worn bats and keep them from wiggling or flying off the wheelhead. Just wet it, set it and forget it! The durable material applies an ideal amount of gripping power, and will not crack or become brittle as it dries.



Soak in water      Place on wheel      Press bat down

BM12 .....	12" Bat Gripper .....	\$9.95
BM14 .....	14" Bat Gripper .....	\$10.95

## HUMP MOLDS

The hump mold throwing system works on any Shimpo wheel. Place the bat adapter on the wheelhead, place a mold on it, and you're ready to turn out several repeatable forms

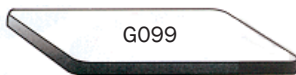


MHA .....	Mold Bat Adapter .....	\$42.00
HMB7.5 .....	Hump Bowl 7½" .....	\$28.00
HMP7.5 .....	Hump Plate 7½" .....	\$28.00
HMP9 .....	Hump Plate 9" .....	\$32.00

- Go to [GEORGIES.COM-HUMP](http://GEORGIES.COM-HUMP) for more Slump/Hump molds -

## PLASTER BOARDS

Made for drying and wedging your cl



G099 .....	17 x 14 x 2½" .....	\$40.00
G0100 .....	21 x 27 x 3" .....	\$125.00

## WHEEL BATS

Production bats enable you to quickly and easily remove your work from the wheel. All new wheels have 10" spacing between their bat pins. Please specify if your wheel has different spacing.



### Spacesaver Bats

When you buy ...	1-5 @	6-11 @	12+ @
RBT9 ..... Hardboard (thin) ¼" .....	\$7.35	\$6.25	\$5.90
(4" x 4" square wareboard for small projects)			
RBT12 .... Medex (thin) 12 x ¼" .....	\$8.40	\$7.14	\$6.72
RBT14 .... Medex (thin) 14 x ¼" .....	\$11.25	\$9.56	\$9.00
RB12 ..... Medex 12 x ⅜" .....	\$10.50	\$8.95	\$8.40
RB14 ..... Medex. 14 x ⅜" .....	\$12.20	\$10.40	\$9.75
RB16 ..... Medex. 16 x ⅜" .....	\$14.75	\$12.55	\$11.80
RB18 ..... Medex 18 x ⅜" .....	\$19.50	\$16.60	\$15.60
RB22 ..... Medex 22 x ⅜" .....	\$28.75	\$24.45	\$23.00
RBP9 ..... Black (Plastic) 9 x ¼" .....	\$11.65	\$9.90	\$9.32
RBP12 .... Black (Plastic) 12 x ¼" .....	\$14.75	\$12.55	\$11.80
RBP14 .... Black (Plastic) 14 x ¼" .....	\$22.15	\$18.83	\$17.72
RBP16 .... Black (Plastic) 16 x ¼" .....	\$36.65	\$31.15	\$29.30
RBP18 .... Black (Plastic) 18 x ¼" .....	\$41.90	\$35.60	\$33.50
RBP22 .... Black (Plastic) 22 x ⅜" .....	\$58.75	\$49.95	\$47.00

### Northstar Super Star

RBP13 .....	Blue (HDPE) 13 x ⅜" .....	\$23.00 ea
RBP15 .....	Blue (HDPE) 15 x ⅜" .....	\$30.00 ea

### Creative Industries

	1-5 @	6-11 @	12+ @	
CI7 .....	Square 7½" .....	\$11.00	\$9.35	\$8.25
CI12 .....	Plastic 12" .....	\$12.00	\$12.75	\$11.25
CI14 .....	Plastic 14" .....	\$17.00	\$14.45	\$12.75

### Shimpo (Aspire only)

ASPIREB .....	Plastic .....	\$11.90 ea
---------------	---------------	------------

### Studio Pro Trimbats

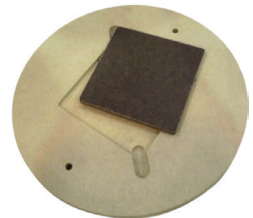
TBT14 .....	¼" Thin Foam 14" .....	\$30.00 ea
TB14 .....	¾" Thck Foam 14" .....	\$37.00 ea
TBT18 .....	¼" Thin Foam 18" .....	\$40.00 ea
TB18 .....	¾" Thck Foam 18" .....	\$50.00 ea

## BAT SYSTEMS

### Northstar Bat Insert Systems

Outer bat is ½" thick Medex. Inserts are ¼" thick, and fit flush with top of the base.

NS860 .....	Bat Base 13" w .....	\$65.99 ea
NS863 .....	Set of 12 Inserts .....	\$29.99 ea



### Spacesaver Bat Insert Systems

SSB .....	Adapter Bat 14" .....	\$43.00 ea
SSI .....	Insert Bat 6" square .....	\$5.30 ea