

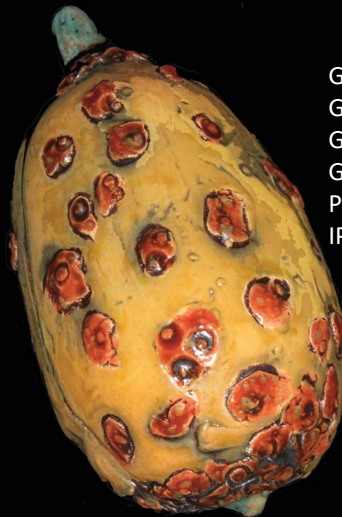
Planting Seed-Pods

Layering Pigments and Glazes

GLW54 Paprika Matte
GLW56 Chartreuse Matte
PG653 Golden Green
IP202 Tree Bark



GLW12 Eggshell Wash (base)
GLW54 Paprika Matte
GLW55 Turmeric Matte
GLW56 Chartreuse Matte
PG647 Burnt Orange
IP205 Autumn Foliage



PG647 Burnt Orange
PG652 Chartreuse Gloss
PG653 Golden Green
IP202 Tree Bark

GLW23 White Froth
PG651 Mottled Brown
PG653 Golden Green

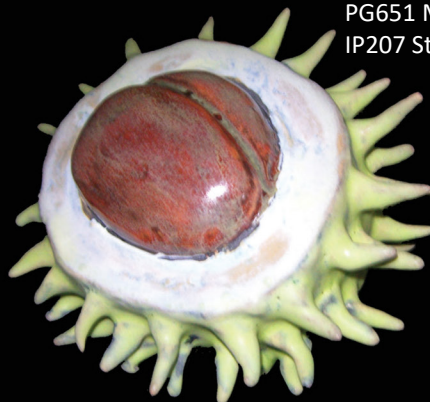
The blush comes from the
clay:glaze interaction.
CC512 Three Finger Jack



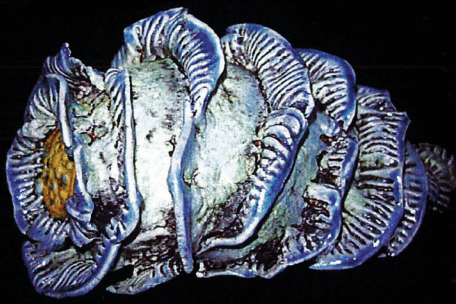
GLW37 Pure White Matte
GLW56 Chartreuse Matte
PG647 Burnt Orange under
PG651 Mottled Brown
IP207 Steel Black

GLW37 Pure White Matte
GLW56 Chartreuse Matte
PG648 Maroon Gloss
CC535D Trail Mix Dark
Chocolate

Base is GLW31 Dry Rust
that is wiped back



The Clay body used for all pods was Georgies CC520 G Mix 6 unless otherwise noted.
G Mix 6 is an off-white, fine, tight, mid-range clay body.



GLW23 White Froth
 GLW55 Turmeric Matte
 PG638 Blue Violet
 IP202 Tree Bark
 ... GLW23 is very reactive. It offers a green/brown color when over IP202. PG638 was lightly sprayed.



CC520 G MIX 6



CC512 Three Finger Jack



CC535D Dark Chocolate

CLAY CHOICE MAKES A DIFFERENCE!

GLW23 White Froth
 PG647 Burnt Orange
 PG653 Golden Green
 ... IP207 Steel Black under berries on first cotton ball seed - no pigments on the other 2 pods.



GLW54 Paprika matte
 PG653 Golden Green
 IP207 Steel Black



PG651 Mottled Brown
 GLW56 Chartreuse
 Matte
 IP207 Steel Black



GLGLW55 Turmeric Matte
 PG647 Burnt Orange
 PG653 Golden Green
 IP202 Tree Bark



GLW54 Paprika Matte
 PG653 Golden Green
 IP207 Steel Black



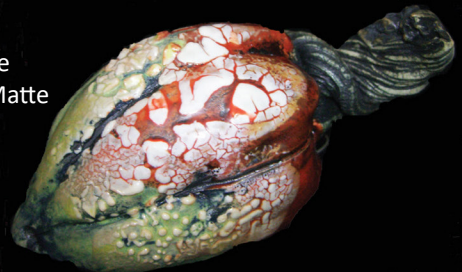
PG651 Mottled Brown
 GLW54 Paprika Matte
 IP207 Steel Black



← On the left ...
 PG647 Burnt Orange
 PG652 Chartreuse Gloss
 GLW15 Jujube White
 Top: IP207 Steel Black
 Bottom: IP202 Tree Bark



... On the right →
 GLW54 Paprika Matte
 GLW56 Chartreuse Matte
 GLW15 Jujube White
 IP207 Steel Black on both pods



"Everything matters and nothing is the same" - Patrick Horsley, artist and potter.
 Application or changing a wipe back pigmnet can change the look of your piece.
 All 4 pods above were made with CC520 G Mix 6 clay.



GLW12 Eggshell Wash (base)
 GLW54 Paprika Matte
 GLW55 Turmeric Matte
 GLW56 Chartreuse Matte
 IP205 Autumn Foliage (sprayed)



GLW23 White Froth
 IP202 Tree Bark



GLW12 Eggshell Wash (base)
 GLW54 Paprika (very Light)
 GLW55 Turmeric Matte
 IP205 Autumn Foliage



GLW15 Jujube White
 on CC535D Trail Mix Dark
 Chocolate clay body

Figs: GLW12 Eggshell Wash (base)
 GLW56 Chartreuse Matte
 PG638 Blue Violet
 (glaze inlay done with PG638)



Tray: PG647 Burnt Orange
 PG653 Golden Green
 IP207 Steel Black



GLW55 Turmeric Matte
 PG621 Wonder Red
 PG653 Golden Green
 IP207 Steel Black



PG638 Blue Violet
 PG651 Mottled Brown
 GLW55 Turmeric Matte
 IP207 Steel Black



PG639 Hot Orchid
 GLW55 Turmeric Matte
 GLW56 Chartreuse Matte
 IP207 Steel Black



PG648 Maroon
 PG624 Ripe Apple Red
 GLW08 Copper Patina
 IP207 Steel Black



GLW12 Eggshell Wash (base)
 GLW55 Turmeric Matte
 GLW54 Paprika Matte
 PG653 Golden Green
 IP207 Steel Black



IP203 Golden Straw -
 pigment wiped back, the
 back side is bare clay
 PG650 Brown
 PG653 Golden Green



GLW12 Eggshell Wash (base)
 GLW55 Turmeric Matte
 GLW54 Paprika Matte
 PG648 Maroon
 PG653 Golden Green
 IP205 Autumn Foliage



GLW12 Eggshell Wash (base)
 GLW55 Turmeric Matte
 GLW54 Paprika Matte
 GLW08 Copper Patina
 PG653 Golden Green
 IP205 Autumn Foliage

Creating Layers - How we do it !

Our test clay is Georgies CC520 G Mix 6; a light, off-white clay body with a fine tight texture...except where noted.
We bisque to ^04 and glaze fire to ^6 on medium speed - no hold.



Begin on ^04 bisque.



Brush 1 coat of your choice of Interactive Pigment over the entire piece.



With a clean sponge and water, wipe back to your desired level to show & enhance your detail.



"Fussy Glazing" as Christy calls it ... begins with the fine details. Choose the small areas and apply 2-3 coats.



Wax Resist - apply wax resist to your glazed areas. Premium resist is great.



Apply glaze to remaining areas. You can choose a single color or layer glazes as we have done.



The finished piece ...

PG647 Burnt Orange Berries
PG652 Chartreuse Gloss
PG653 Golden Green
IP202 Tree Bark

Glazes used in this Flyer ...



PG621
Wonder Red



PG624
Ripe Apple Red



PG638
Blue Violet



PG639
Hot Orchid



PG647
Burnt Orange



PG648
Maroon



PG650
Brown



PG651
Mottled Brown



PG652
Chartreuse



PG653
Golden Green



GLW08
Copper Patina



GLW12
Eggshell Wash



GLW15
Jujube White



GLW23
White Froth



GLW31
Dry Rust



GLW37
Pure White Matte



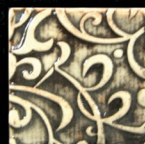
GLW54
Paprika Matte



GLW55
Turmeric Matte



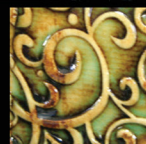
GLW56
Chartreuse Matte



IP202
Tree Bark



IP203
Golden Straw



IP205
Autumn Foliage



IP207
Steel Black

Georgies
CERAMIC AND CLAY CO.